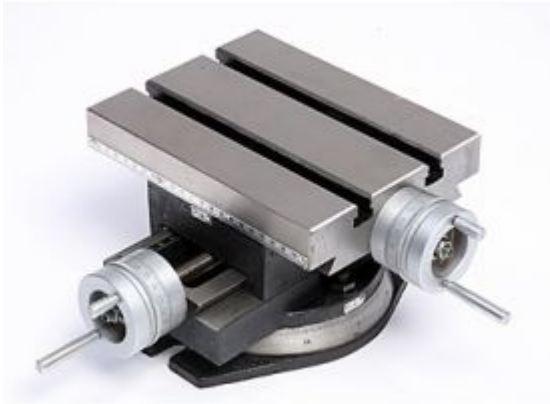


Dawn 62174 - Cross Slide Vice Table Standard - Swivel Base



Product Description

Cross Slide Table enables any Dawn Vice to have a Cross Slide capability.

- Provides a cross slide capability in the X and Y axis.
- Swivel base model has an additional rotary capability.
- Sturdy construction.
- Dial indexed handle in 0.01mm graduations.
- T slot vice mounting.
- Adjustable slide tension.
- Table position locking capability.
- Table Size: 225 x 175mm
- Table Height: 140mm